



### Forward Collision Mitigation System

It is a last resort braking mechanism that engages autonomously in critical moments when the driver does not react to the warnings of the Forward Collision Warning system.



### Driver Fatigue Monitoring System

It is an algorithmic analysis system that continuously monitors whether the person behind the steering wheel remains awake and focused on the road.



### Pedestrian Detection System

It is a specific safety subsystem optimized to detect pedestrians and cyclists who may suddenly step in front of vehicles, especially in urban traffic.



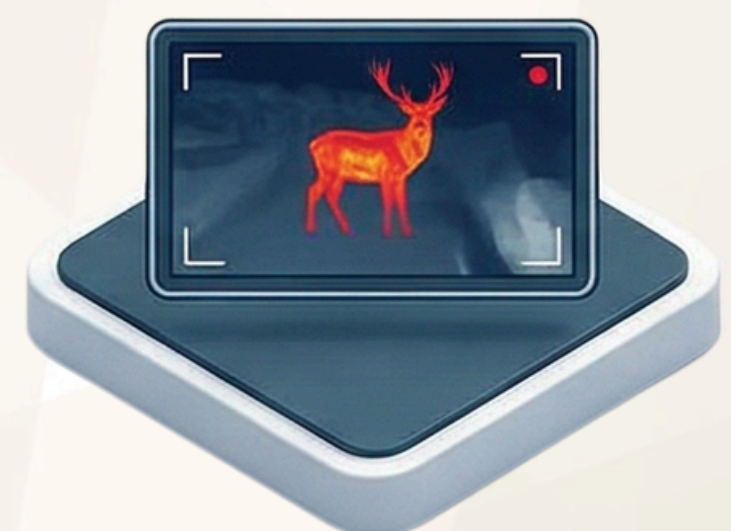
### Adaptive Headlight System

It is an intelligent lighting technology that instantaneously changes the illumination angle and intensity during night driving according to the steering direction, vehicle speed, and oncoming traffic.



### Night Vision and Animal Detection System

It is an advanced safety measure that detects the body heat of living creatures in dark environments where the human eye or standard headlights are insufficient.



### eCall Emergency Call System

It is a telematics communication system that autonomously transmits the status and location information of the vehicle to emergency service teams after a crash, even if the occupants of the vehicle are unconscious.

