



Adaptive Cruise Control (ACC)

This system is intelligent comfort and safety equipment that automatically adjusts the speed of your vehicle according to the speed of the vehicle ahead during highway driving.



Lane Departure Warning

It is a proactive safety measure that activates if the driver leaves their lane without signaling.

Forward Collision Warning

It is a critical assistant system that warns the driver in advance of a potential hazard by detecting obstacles, other vehicles, or pedestrians in front of the vehicle.

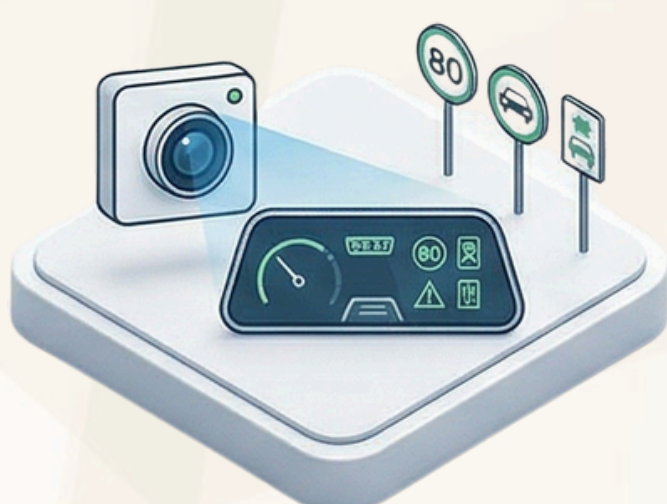


Lane Keeping Assist

It is an active steering support system that not only provides a warning but also physically intervenes when the vehicle shows a tendency to depart from its lane.

Blind Spot Monitoring

It acts as an invisible electronic eye that detects vehicles traveling in areas the driver cannot see through the mirrors.



Traffic Sign Recognition

It is an informational assistant that reads speed limits, no overtaking restrictions, and other important traffic signs along the roadside in real time and displays them on the screen of the driver.