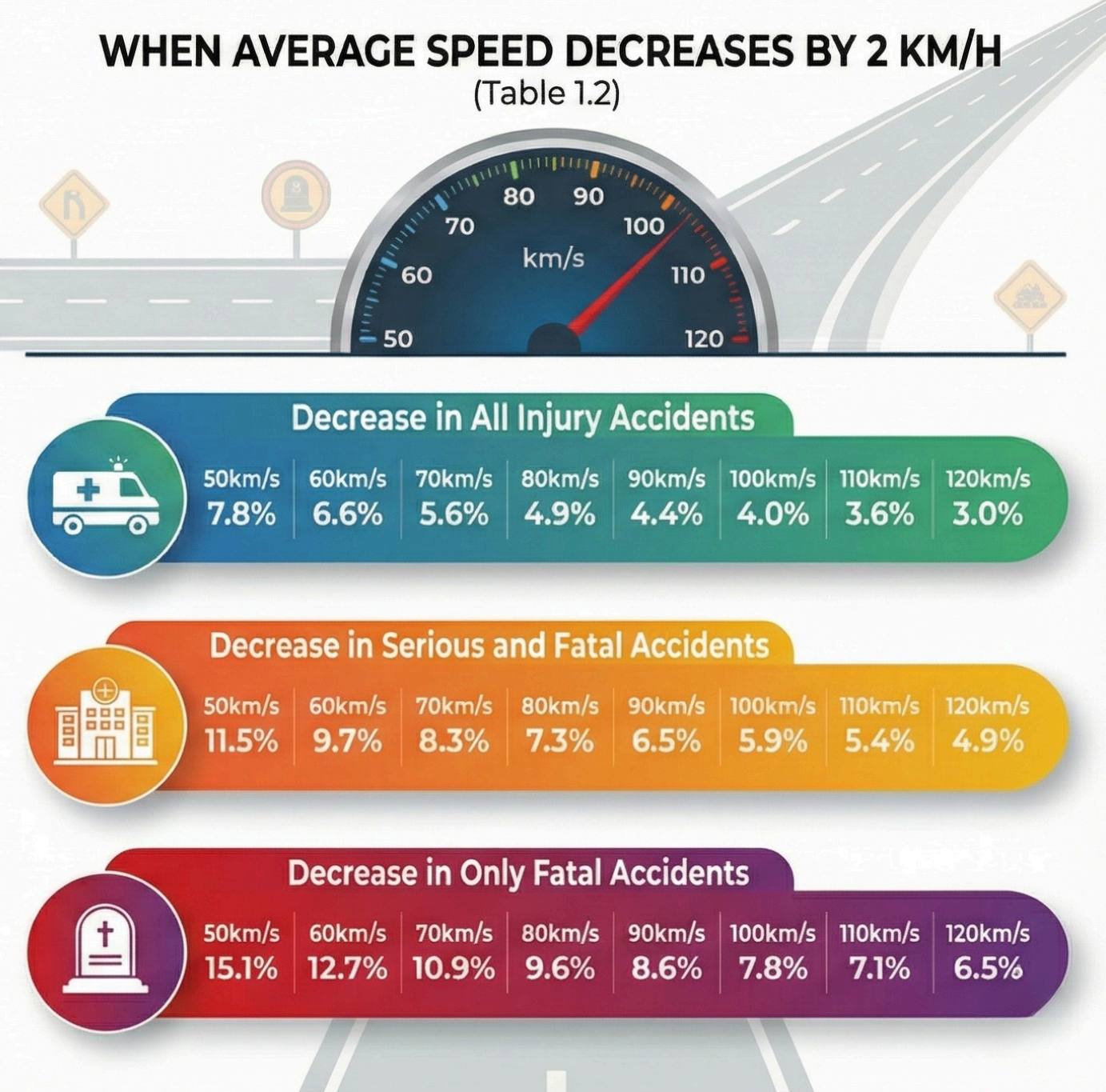
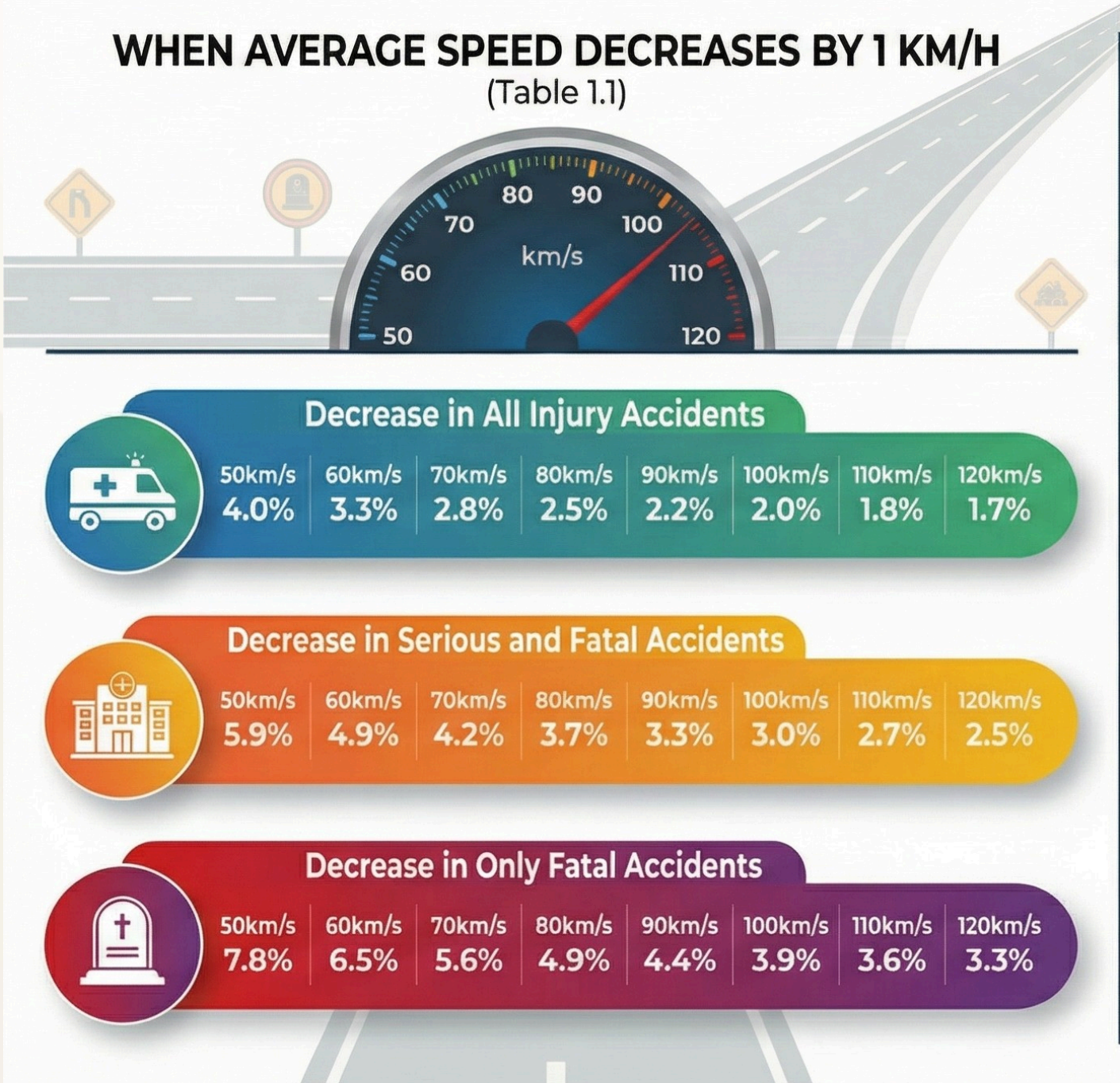


# ROAD SAFETY

## THE EFFECT OF SPEED ON CRASH



- Speed compromises safety in two ways:
  - It increases the likelihood of a crash – braking distance increases, and evasive maneuvers become more difficult.
  - It increases the severity of the crash – kinetic energy increases with the square of speed.
- 1% increase in average speed results in a 4% increase in the risk of a fatal crash and a 3% increase in the risk of serious injury.
- 5% increase in average speed leads to approximately a 10% increase in all injury crashes and a 20% increase in fatal crashes.
- Various studies in Europe report a 25–40% reduction in pedestrian fatalities in cities that reduced the speed limit from 50 km/h to 30 km/h.

